

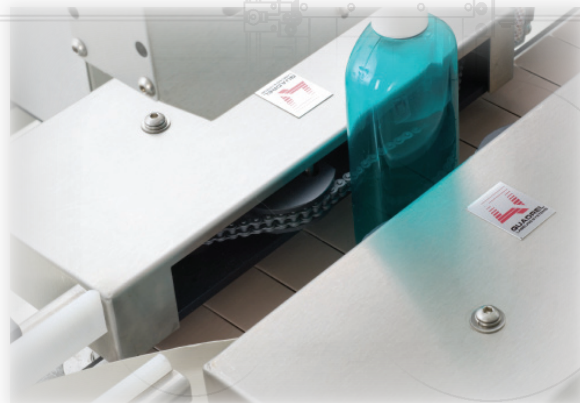
TECHLINE®

Front/ Back Labeling System

TechLine is a high performance, economically-priced labeling system for front/ back, wrap or custom applications with production rates up to 275 ppm.

TechLine surpasses all equipment in its price range and is suitable for multi-shift operations where long-term reliability is important.

Features such as PLC control with color touchscreen and simple 'no tool/ no change parts' operation provide maximum flexibility for today's packagers.



- Compact footprint
- Suitable for harsh/ multi-shift environments
- Allen-Bradley® PLC control with color touchscreen
- 50 programmable product presets
- Encoder-based speed compensation
- AC inverter controlled product handling
- Ideal for Pharmaceutical, Food, Personal Care, Automotive and other markets

CAPABILITIES

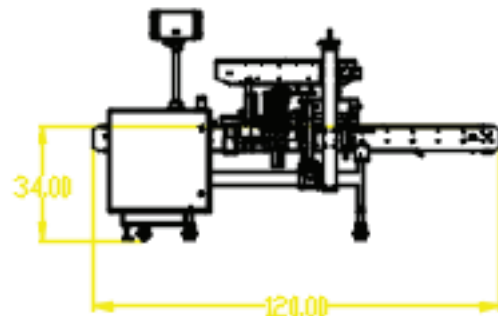
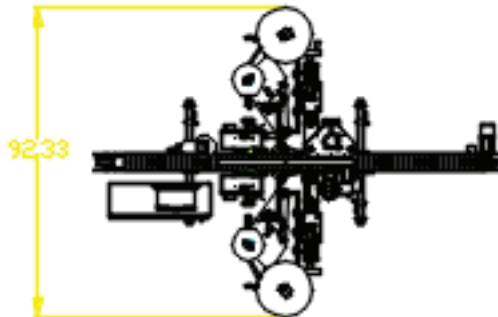
QUALITY / FLEXIBILITY

The TechLine labeling system is suitable for single or multi-shift operations where long-term reliability is important. All critical components are designed for 24/7 reliability.

The versatility of TechLine makes it ideal for contract packagers or companies requiring frequent changeovers on a wide variety of products.

ADVANCED CONTROLS

TechLine features Allen-Bradley® PLC control with on board diagnostics and label/ product preset memory. Additional features include color touchscreen operator interface and AC inverter controlled product handling.



STANDARD FEATURES

SYSTEM

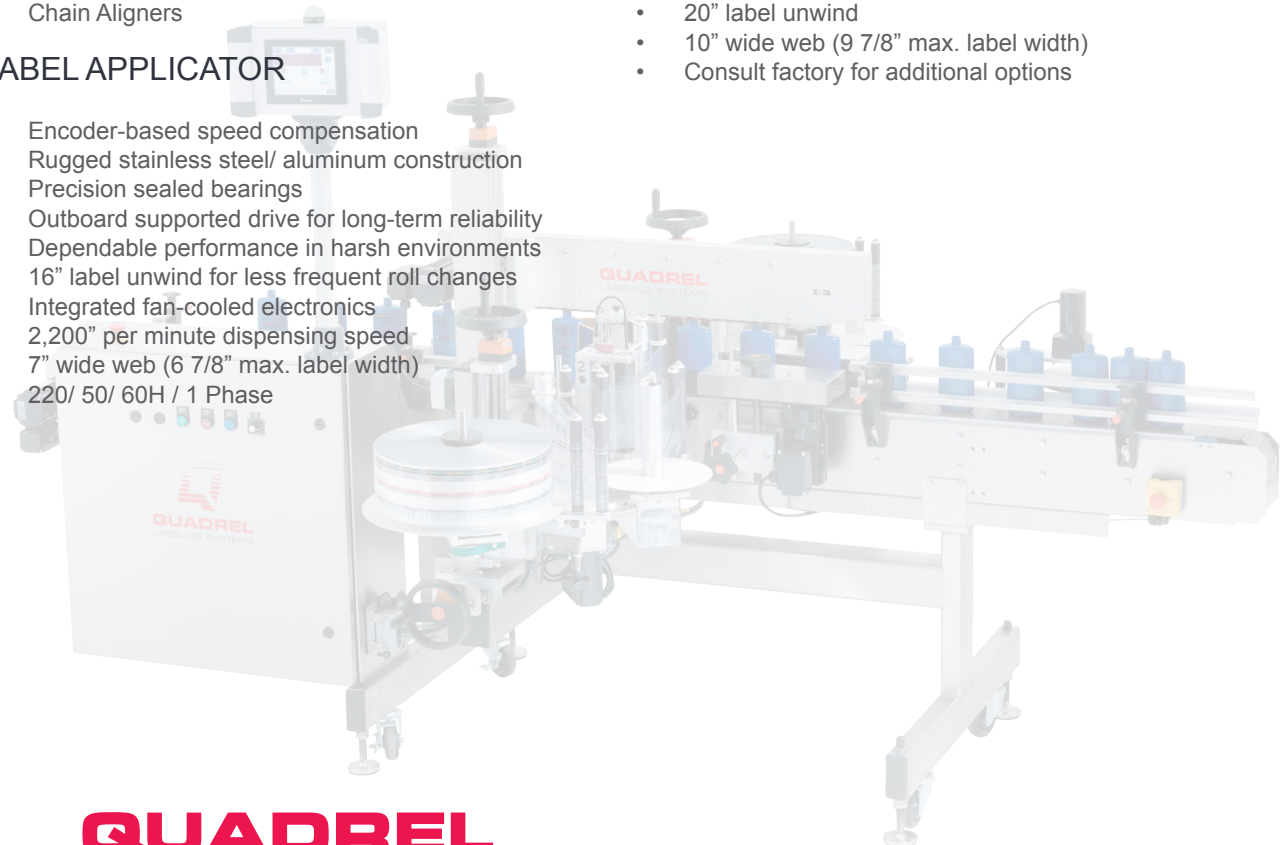
- Touchscreen operator interface
- AC inverter controlled product handling
- 4-1/2" width x 120" length x 34" height conveyor
- Digital speed indicator on touchscreen
- Stainless steel welded frame
- Production Rate: Up to 275 products per minute (dependent upon label/product dimensions)
- Applied Accuracy: Up to $\pm 1/32"$ @ Sigma 2 (exclusive of product variation)
- Maximum Product Height: 14"
- Pacing wheel
- Chain Aligners

LABEL APPLICATOR

- Encoder-based speed compensation
- Rugged stainless steel/ aluminum construction
- Precision sealed bearings
- Outboard supported drive for long-term reliability
- Dependable performance in harsh environments
- 16" label unwind for less frequent roll changes
- Integrated fan-cooled electronics
- 2,200" per minute dispensing speed
- 7" wide web (6 7/8" max. label width)
- 220/ 50/ 60H / 1 Phase

OPTIONS

- Single side or wraparound configuration
- Missing label on product detection
- Vision system integration
- Product pacing and alignment feedscrews
- Variable speed wrap station for round containers (Available in 12", 18" or 24")
- Low label detection
- End-of-web detection
- Broken web detection
- Loose- Loop Thermal Transfer, Laser or Inkjet printer
- Hot stamp imprinter
- Clear label detection
- 20" label unwind
- 10" wide web (9 7/8" max. label width)
- Consult factory for additional options



QUADREL
LABELING SYSTEMS